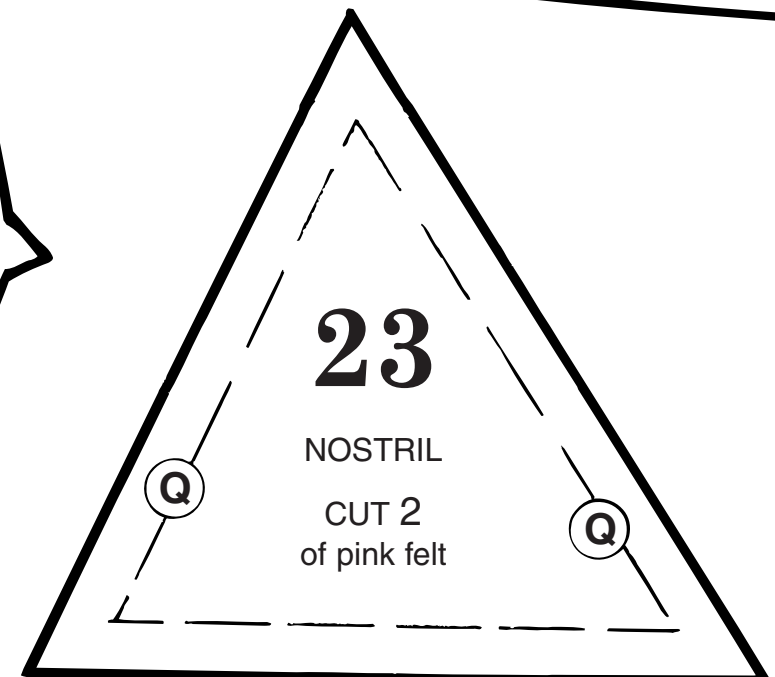
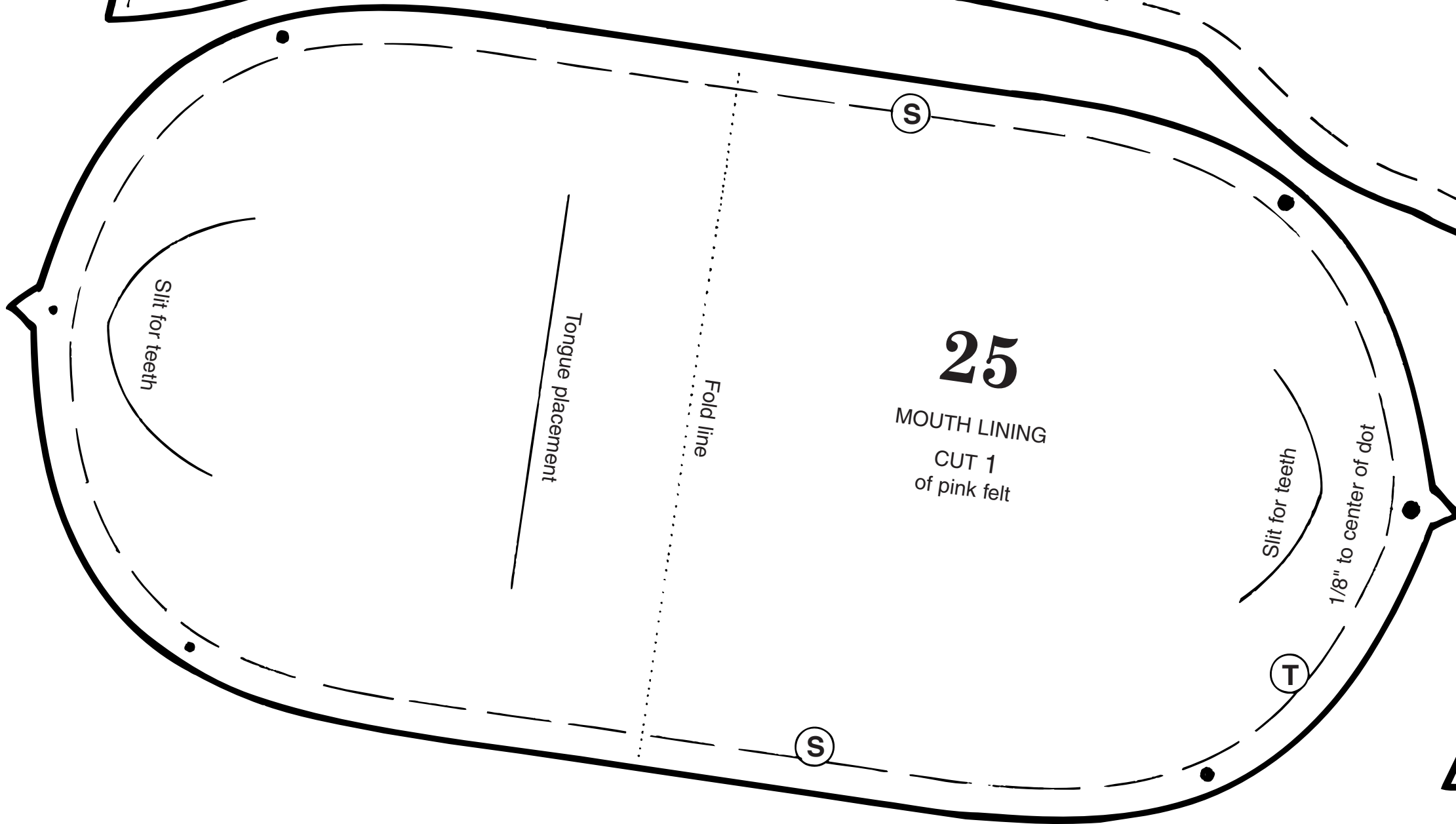
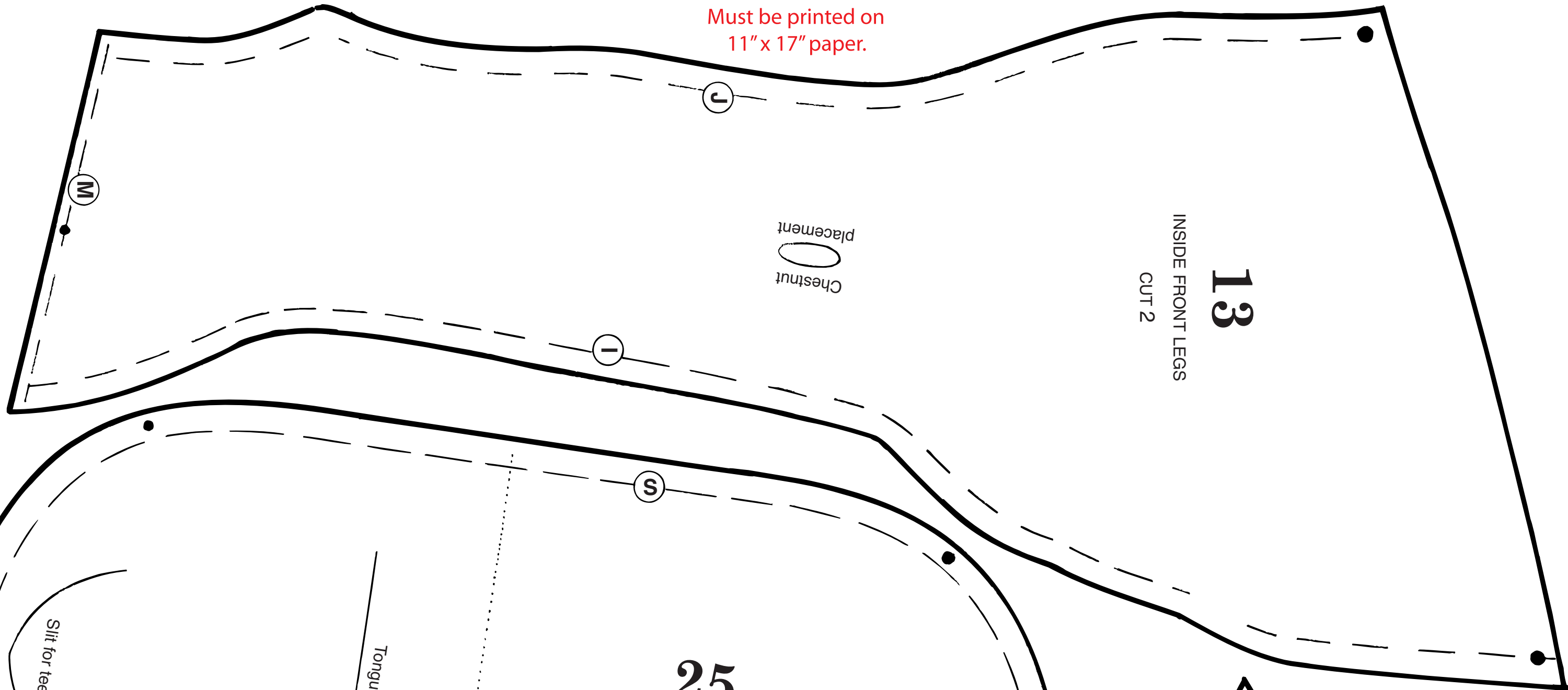
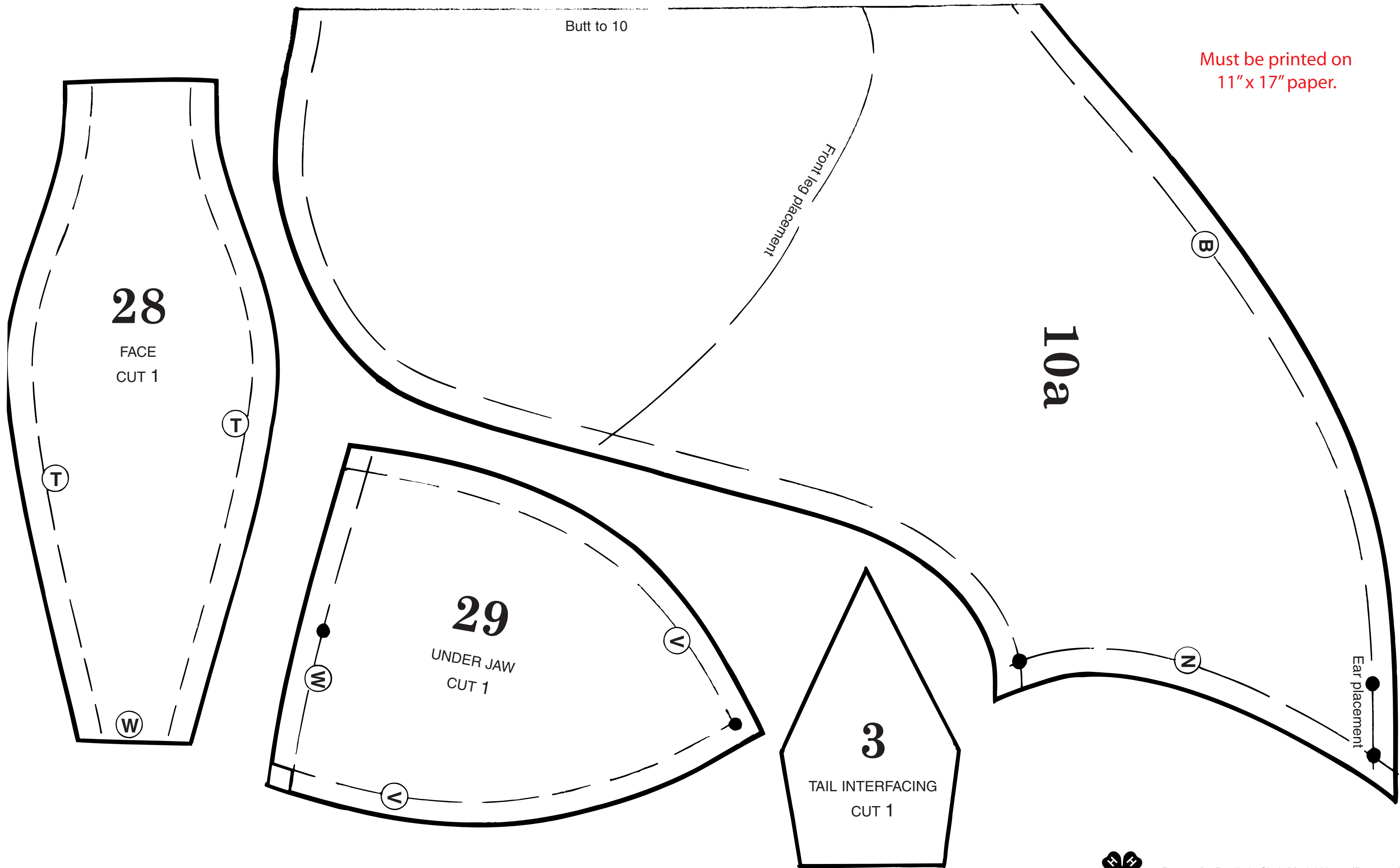


Must be printed on
11" x 17" paper.



Must be printed on
11" x 17" paper.



28

FACE
CUT 1

Butt to 10

Front leg placement

10a

29

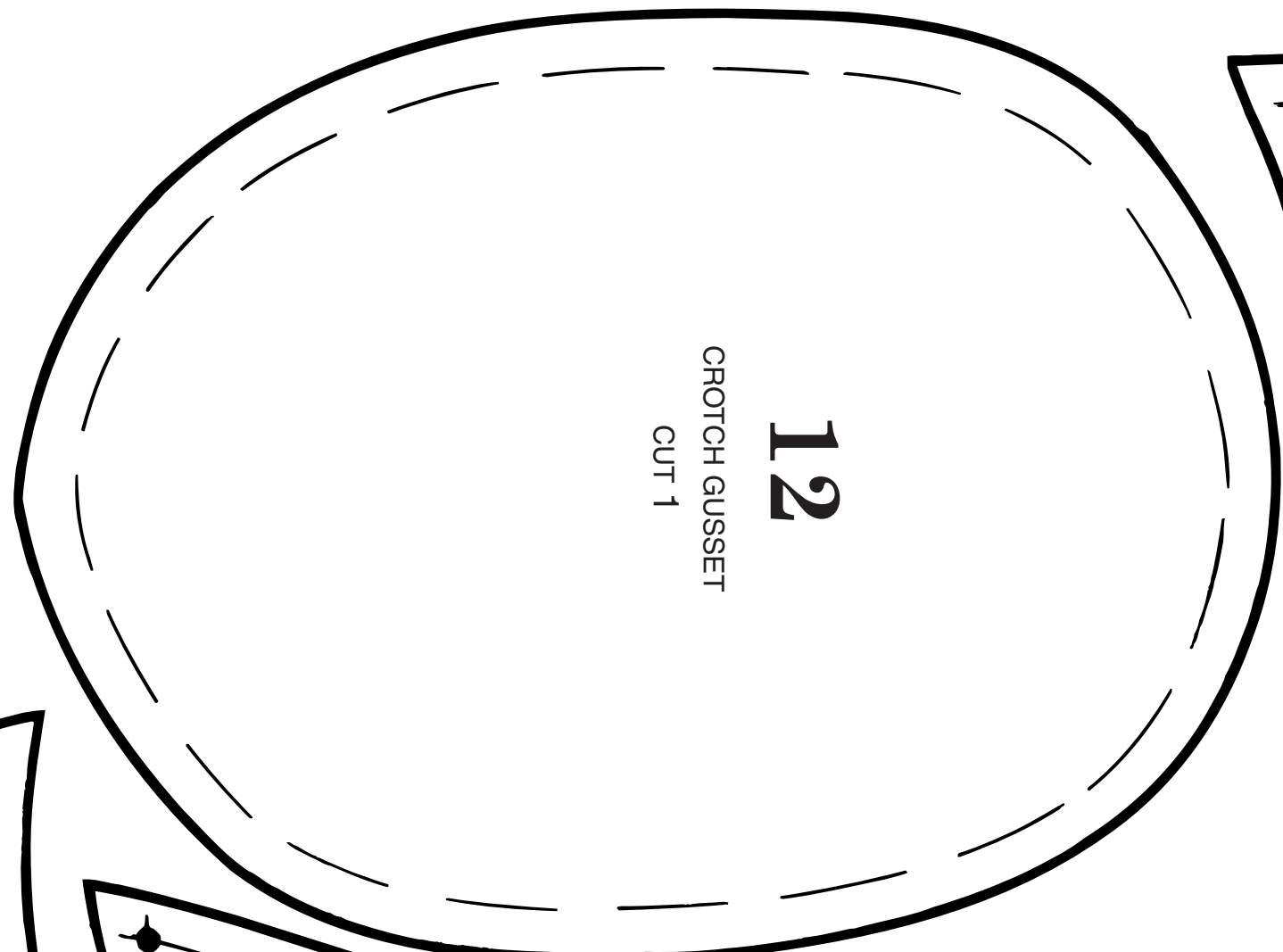
UNDER JAW
CUT 1

3

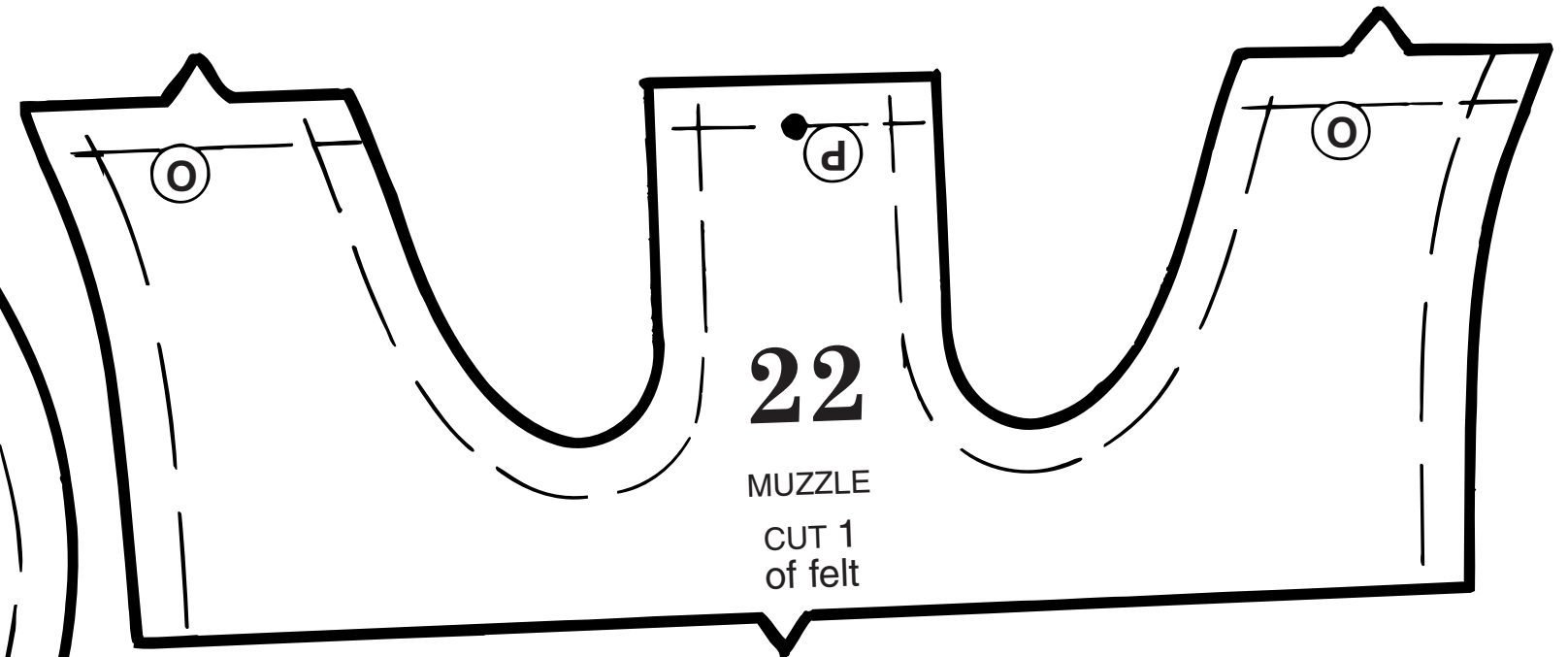
TAIL INTERFACING
CUT 1

Ear placement

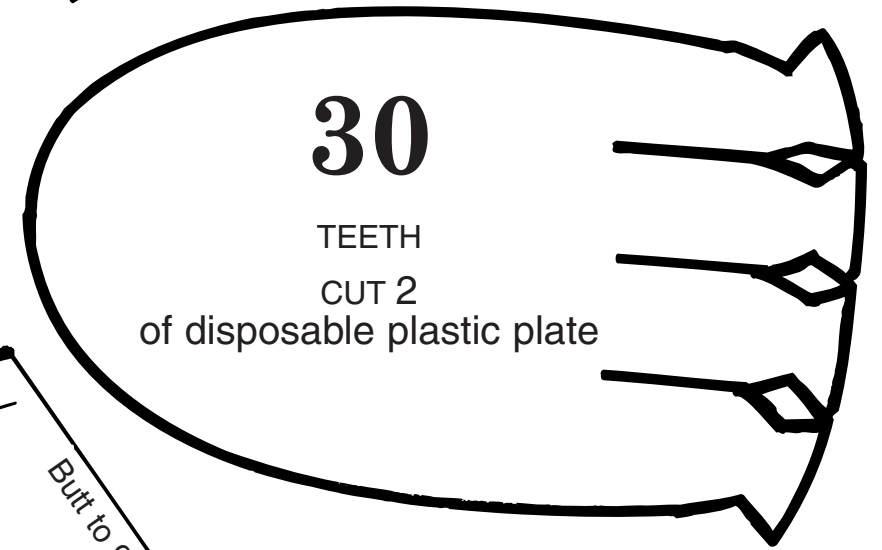




12
CROTCH GUSSET
CUT 1

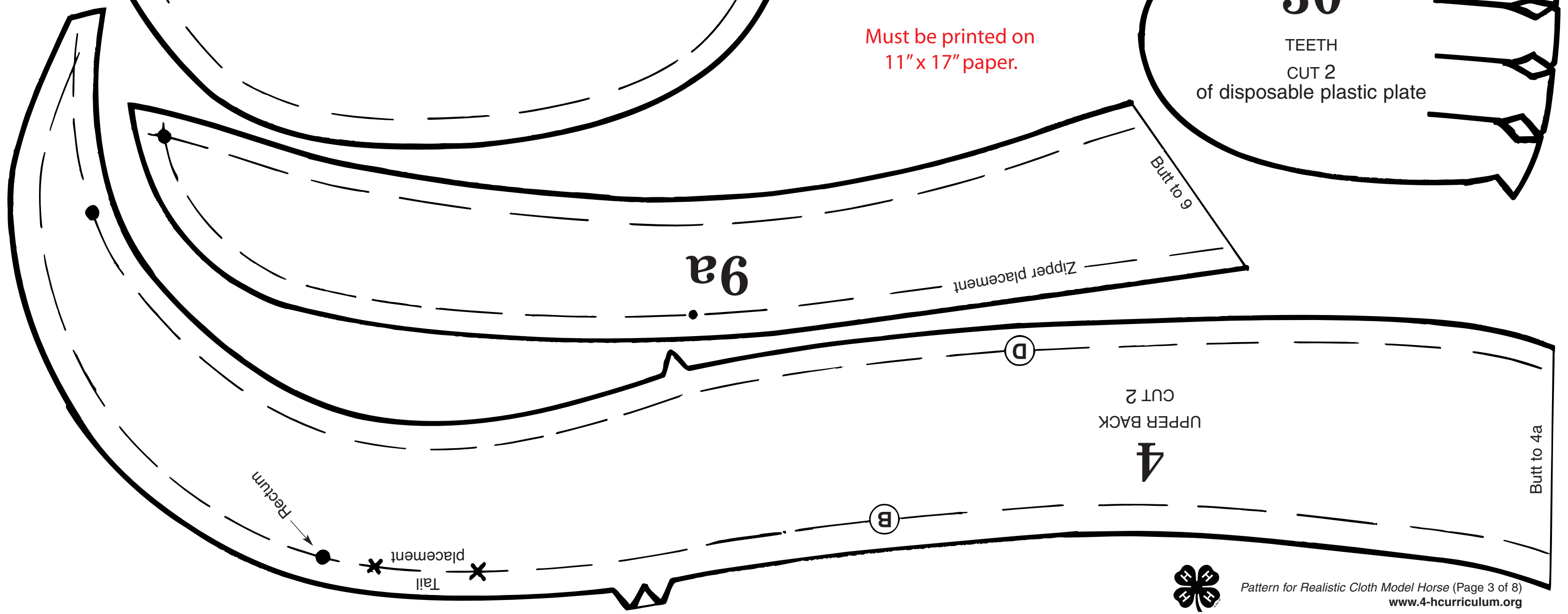


22
MUZZLE
CUT 1
of felt



30
TEETH
CUT 2
of disposable plastic plate

Must be printed on
11" x 17" paper.



9a

UPPER BACK
CUT 2



Butt to 9

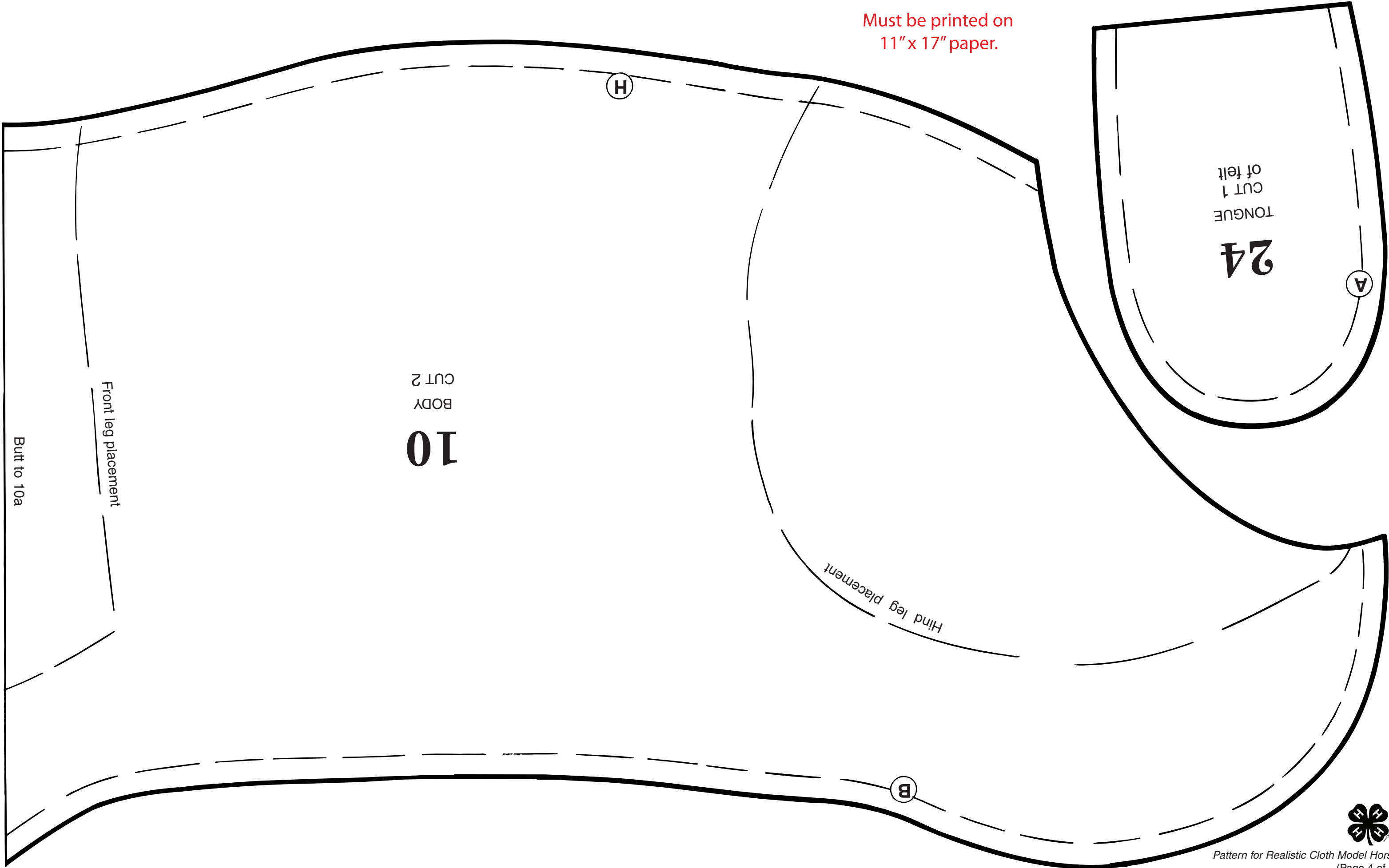
Butt to 4a

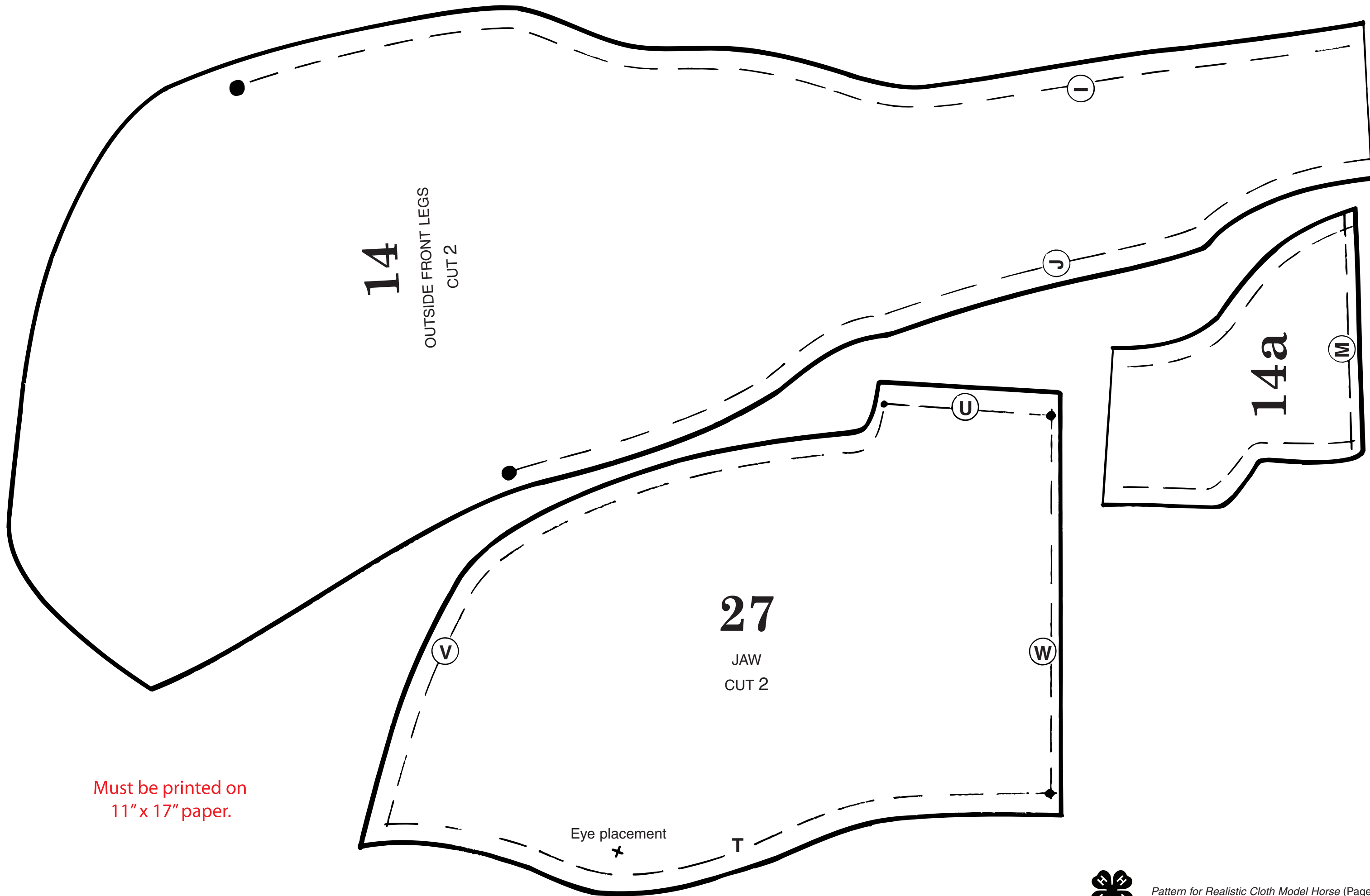
Return

Tail
placement



Must be printed on
11" x 17" paper.





14
OUTSIDE FRONT LEGS
CUT 2

27
JAW
CUT 2

14a

Must be printed on
11" x 17" paper.

Eye placement
x



Must be printed on
11" x 17" paper.

7

Chestnut placement

Butt to 15a

Straight of grain

INSIDE HIND LEGS
CUT 2

15

Butt to 15

K

Basting line

11
STORAGE LINER
CUT 1
of cotton

Basting line

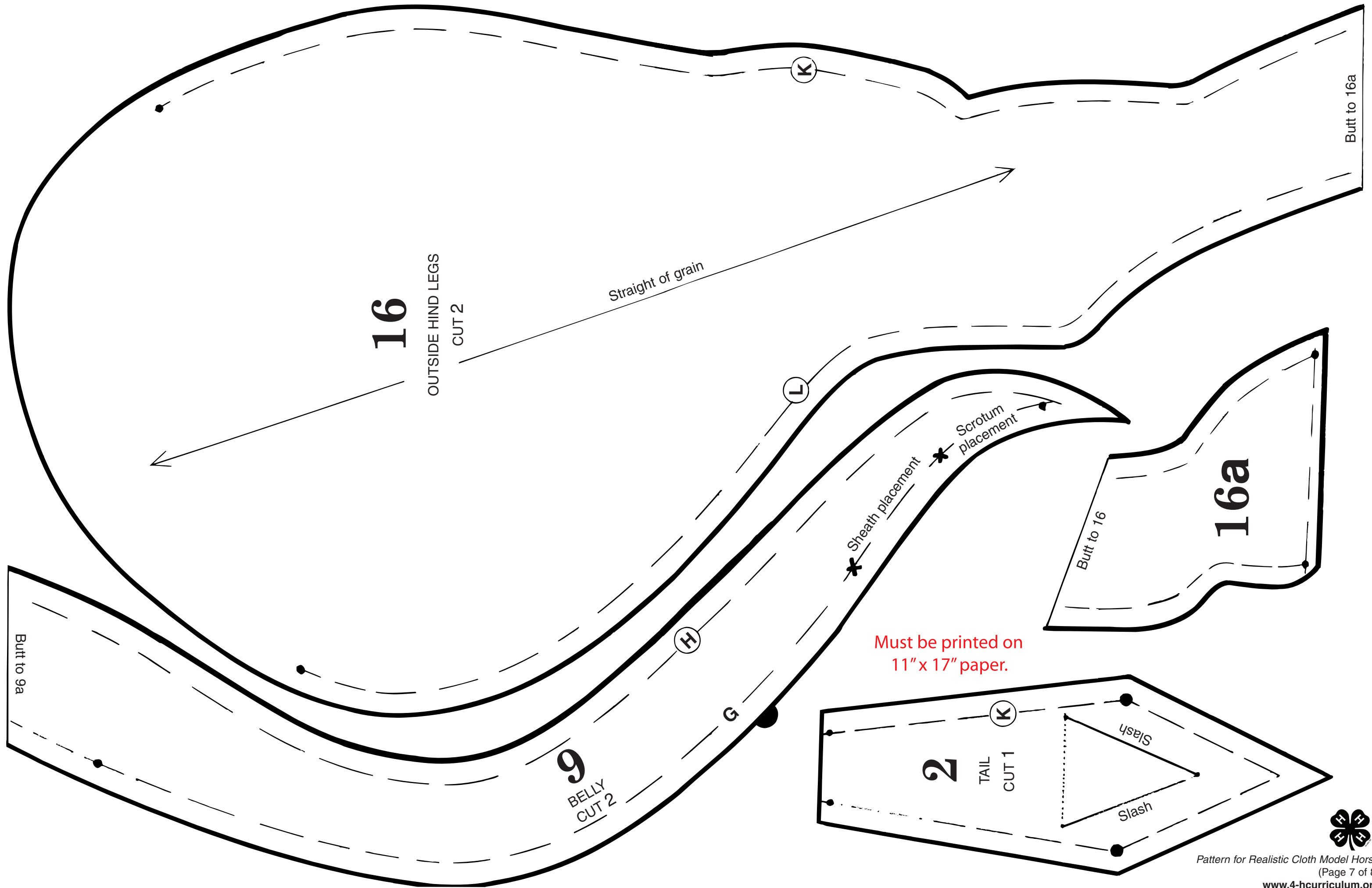
31

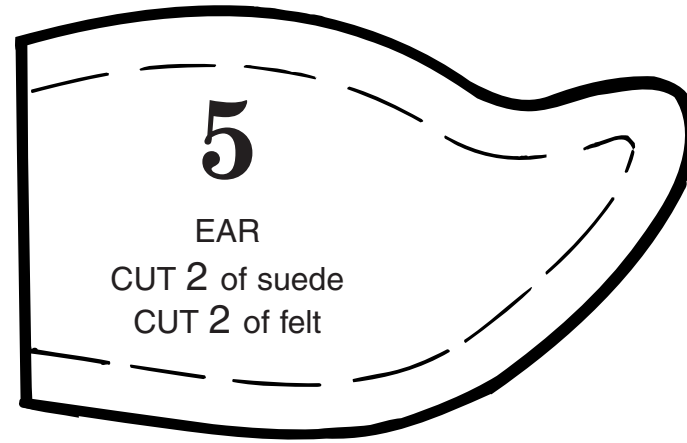
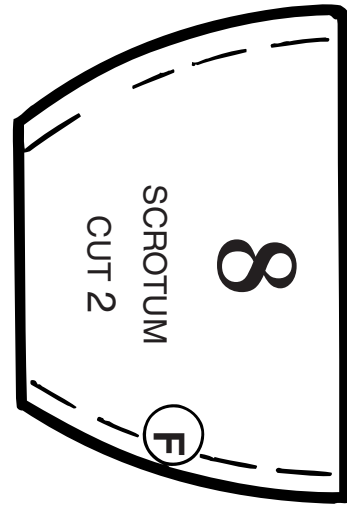
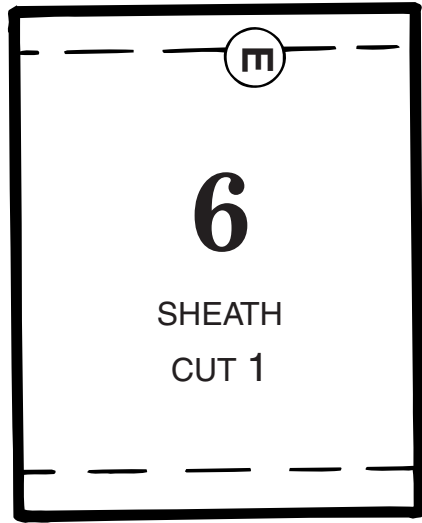
HORSESHOE
CUT 4 of tooling foil

21

CHESTNUTS
CUT 4 from sponge







Must be printed on 11" x 17" paper.

